

FLOOR FRAME LAYOUT

Trusstech SA Pty Ltd

ABN: 40 1 318 22 140 16 High Street Dry Creek SA 5094 Ph: 08 8260 6006



OAKRIDGE BUILDING SERVICES

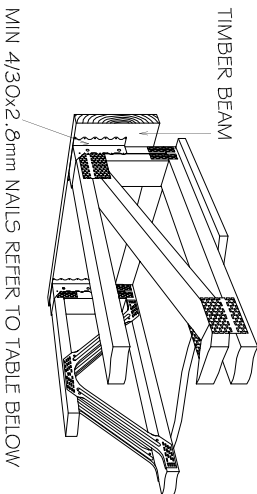
Ph : 83637222
Fax : 83637225

FLOOR TRUSSES: SJ-400 @ 600 CTRS GENERALLY UNO
WET AREA JOISTS: SJ-355 @ 600 CTRS GENERALLY UNO
BALCONY JOISTS: SJ-310 @ 600 CTRS GENERALLY UNO
FLOORING: 22mm PARTICLE BOARD
18mm COMPRESSED SHEET TO W/A & BALCONY
LEDGER PLATE: 120x35 MGP10 TO ENDS
FLOOR BEARER JOCTIONS FIXED WITH 4/1 50mm BUGLE
SCREWS UNO
1/2" = 150x150x10 EA @ 300mm LONG
WITH 2 M16 BOLTS & 40mm
SQUARE WASHER TO EACH SIDE

ALL MATERIALS ALLOWED AS PER AS 1684.2-2010
JOINT GROUP= JD5
TRUSSES & BRACING TO BE INSTALLED, ERECTED
& BRACED IN ACCORDANCE WITH AS4440-2004
NOTE: TRUSSES & JOISTS TO BE POSITIONED
DIRECTLY OVER STUDS
UNLESS SHOWN OTHERWISE ON LAYOUT, NO
SPECIAL LOADS HAVE BEEN ALLOWED.
EG - SPA BATHS, HOT WATER SYSTEMS ETC.

WET AREA DETAILS
THE WET AREA SHEET FLOORING MUST BE LAID IN
STRICT ACCORDANCE WITH THE RECOMMENDATIONS
BY JAMES HARDIE. REFER TO THE BATHROOM
COMPRESSED SHEET DETAILS.
* ALLOW WALL PLATETIMBER INFILL FOR FLOOR TRUSS
CONNECTIONS TO STEEL BEAMS
* FLOOR TRUSSES fixed to bearers using
STRUT HANGER 180x180x90 throughout
X = INTERNAL SUPPORT / CANTILEVER POINT

BOTTOM PLATE FIXING DETAILS
2 NAILING PLATES EACH
END OF BRIDGING, LEGS
NOT BENT, WITH 6/2.0mm
NAILS TO EACH FACE
90x45 BRIDGING
PLATE ON EDGE
BOLT AS PER TABLE
FLOOR TRUSSES



STRUT HANGER 180x180x90 SUPPORTING
NORMAL FLOOR LOADS - FIXING DETAIL

RAFTERS: 240x42 LOSP @ 1200 CTS MAX
FIXED TO LINTEL WITH FB45120

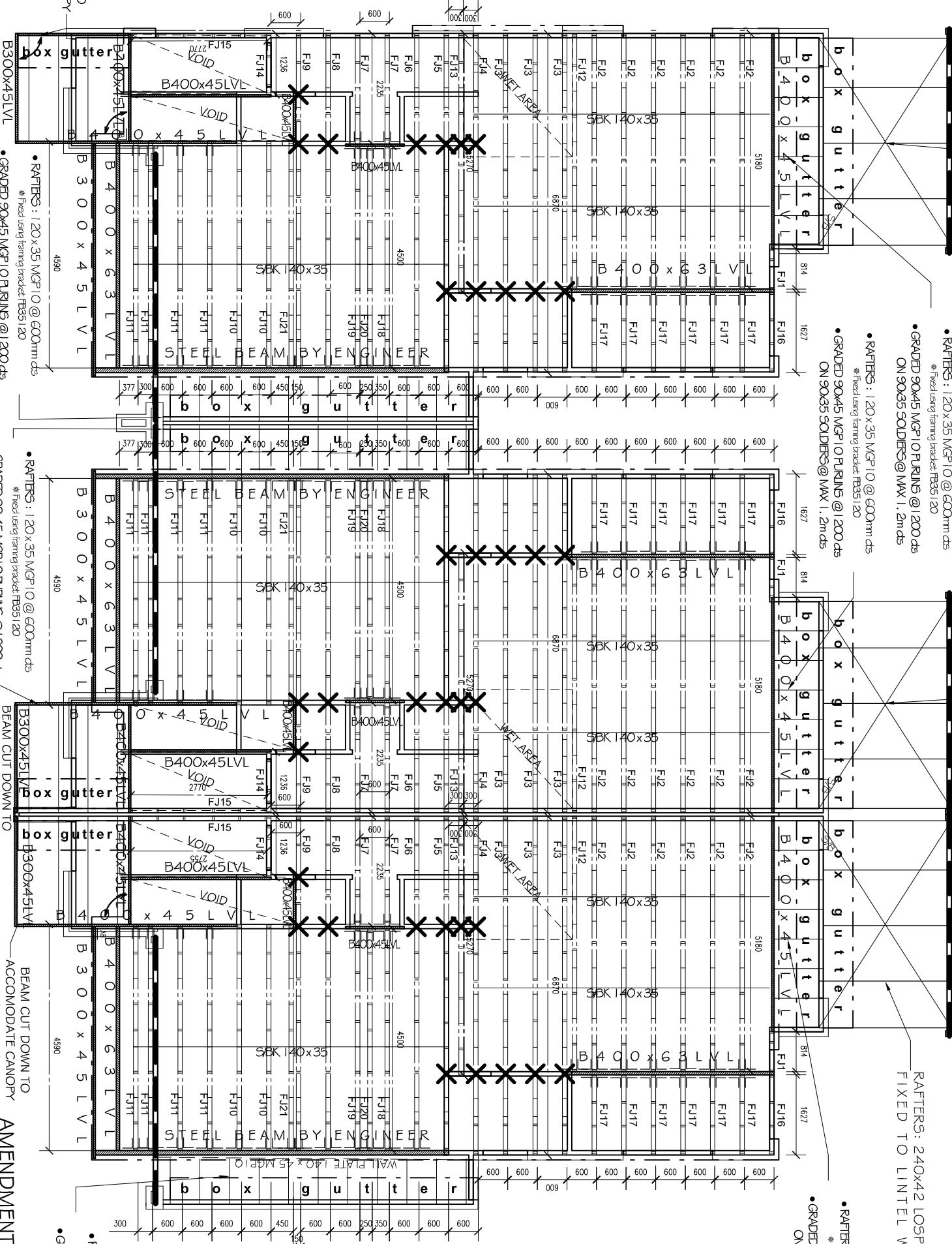
RAFTERS: 240x42 LOSP @ 1200 CTS MAX
FIXED TO LINTEL WITH FB45120

RAFTERS: 240x42 LOSP @ 1200 CTS MAX
FIXED TO LINTEL WITH FB45120

• RAFTERS : 120x35 MGP10 @ 600mm cts
* Fixed using framing bracket FB35120
• GRADED 90x45 MGP10 PURLINS @ 1200 cts
ON 90x35 SOLDIERS@ MAX 1.2m cts

• RAFTERS : 120x35 MGP10 @ 600mm cts
* Fixed using framing bracket FB35120
• GRADED 90x45 MGP10 PURLINS @ 1200 cts
ON 90x35 SOLDIERS@ MAX 1.2m cts

D3



D1

S:\OAKRIDGE TAKEOFFS\D\ANDREA\50-52 WINDSOR ST\DWLG 1-3\DWLG 1-3 50 WINDSOR ST.dwg

BEAM CUT DOWN TO
ACCOMODATE CANOPY
CLADDING

BEAM CUT DOWN TO
ACCOMODATE CANOPY
CLADDING

BEAM CUT DOWN TO
ACCOMODATE CANOPY
CLADDING

BEAM CUT DOWN TO
ACCOMODATE CANOPY
CLADDING

BEAM CUT DOWN TO
ACCOMODATE CANOPY
CLADDING

BEAM CUT DOWN TO
ACCOMODATE CANOPY
CLADDING

BEAM CUT DOWN TO
ACCOMODATE CANOPY
CLADDING

BEAM CUT DOWN TO
ACCOMODATE CANOPY
CLADDING

BEAM CUT DOWN TO
ACCOMODATE CANOPY
CLADDING

BEAM CUT DOWN TO
ACCOMODATE CANOPY
CLADDING

BEAM CUT DOWN TO
ACCOMODATE CANOPY
CLADDING

BEAM CUT DOWN TO
ACCOMODATE CANOPY
CLADDING

BEAM CUT DOWN TO
ACCOMODATE CANOPY
CLADDING

BEAM CUT DOWN TO
ACCOMODATE CANOPY
CLADDING

BEAM CUT DOWN TO
ACCOMODATE CANOPY
CLADDING

BEAM CUT DOWN TO
ACCOMODATE CANOPY
CLADDING

BEAM CUT DOWN TO
ACCOMODATE CANOPY
CLADDING

BEAM CUT DOWN TO
ACCOMODATE CANOPY
CLADDING

BEAM CUT DOWN TO
ACCOMODATE CANOPY
CLADDING

BEAM CUT DOWN TO
ACCOMODATE CANOPY
CLADDING

BEAM CUT DOWN TO
ACCOMODATE CANOPY
CLADDING

BEAM CUT DOWN TO
ACCOMODATE CANOPY
CLADDING

BEAM CUT DOWN TO
ACCOMODATE CANOPY
CLADDING

BEAM CUT DOWN TO
ACCOMODATE CANOPY
CLADDING

BEAM CUT DOWN TO
ACCOMODATE CANOPY
CLADDING

BEAM CUT DOWN TO
ACCOMODATE CANOPY
CLADDING

BEAM CUT DOWN TO
ACCOMODATE CANOPY
CLADDING

BEAM CUT DOWN TO
ACCOMODATE CANOPY
CLADDING

BEAM CUT DOWN TO
ACCOMODATE CANOPY
CLADDING

BEAM CUT DOWN TO
ACCOMODATE CANOPY
CLADDING

BEAM CUT DOWN TO
ACCOMODATE CANOPY
CLADDING

BEAM CUT DOWN TO
ACCOMODATE CANOPY
CLADDING

BEAM CUT DOWN TO
ACCOMODATE CANOPY
CLADDING

BEAM CUT DOWN TO
ACCOMODATE CANOPY
CLADDING

BEAM CUT DOWN TO
ACCOMODATE CANOPY
CLADDING

BEAM CUT DOWN TO
ACCOMODATE CANOPY
CLADDING

BEAM CUT DOWN TO
ACCOMODATE CANOPY
CLADDING

BEAM CUT DOWN TO
ACCOMODATE CANOPY
CLADDING

BEAM CUT DOWN TO
ACCOMODATE CANOPY
CLADDING

BEAM CUT DOWN TO
ACCOMODATE CANOPY
CLADDING

BEAM CUT DOWN TO
ACCOMODATE CANOPY
CLADDING

BEAM CUT DOWN TO
ACCOMODATE CANOPY
CLADDING

BEAM CUT DOWN TO
ACCOMODATE CANOPY
CLADDING

BEAM CUT DOWN TO
ACCOMODATE CANOPY
CLADDING

BEAM CUT DOWN TO
ACCOMODATE CANOPY
CLADDING

BEAM CUT DOWN TO
ACCOMODATE CANOPY
CLADDING

BEAM CUT DOWN TO
ACCOMODATE CANOPY
CLADDING

BEAM CUT DOWN TO
ACCOMODATE CANOPY
CLADDING

BEAM CUT DOWN TO
ACCOMODATE CANOPY
CLADDING

BEAM CUT DOWN TO
ACCOMODATE CANOPY
CLADDING

BEAM CUT DOWN TO
ACCOMODATE CANOPY
CLADDING

BEAM CUT DOWN TO
ACCOMODATE CANOPY
CLADDING

BEAM CUT DOWN TO
ACCOMODATE CANOPY
CLADDING

BEAM CUT DOWN TO
ACCOMODATE CANOPY
CLADDING

BEAM CUT DOWN TO
ACCOMODATE CANOPY
CLADDING

BEAM CUT DOWN TO
ACCOMODATE CANOPY
CLADDING

BEAM CUT DOWN TO
ACCOMODATE CANOPY
CLADDING

BEAM CUT DOWN TO
ACCOMODATE CANOPY
CLADDING

BEAM CUT DOWN TO
ACCOMODATE CANOPY
CLADDING

BEAM CUT DOWN TO
ACCOMODATE CANOPY
CLADDING

BEAM CUT DOWN TO
ACCOMODATE CANOPY
CLADDING

BEAM CUT DOWN TO
ACCOMODATE CANOPY
CLADDING

BEAM CUT DOWN TO
ACCOMODATE CANOPY
CLADDING

BEAM CUT DOWN TO
ACCOMODATE CANOPY
CLADDING

BEAM CUT DOWN TO
ACCOMODATE CANOPY
CLADDING

BEAM CUT DOWN TO
ACCOMODATE CANOPY
CLADDING

BEAM CUT DOWN TO
ACCOMODATE CANOPY
CLADDING

BEAM CUT DOWN TO
ACCOMODATE CANOPY
CLADDING

BEAM CUT DOWN TO
ACCOMODATE CANOPY
CLADDING

BEAM CUT DOWN TO
ACCOMODATE CANOPY
CLADDING

BEAM CUT DOWN TO
ACCOMODATE CANOPY
CLADDING

BEAM CUT DOWN TO
ACCOMODATE CANOPY
CLADDING

BEAM CUT DOWN TO
ACCOMODATE CANOPY
CLADDING

BEAM CUT DOWN TO
ACCOMODATE CANOPY
CLADDING

BEAM CUT DOWN TO
ACCOMODATE CANOPY
CLADDING

BEAM CUT DOWN TO
ACCOMODATE CANOPY
CLADDING

BEAM CUT DOWN TO
ACCOMODATE CANOPY
CLADDING

BEAM CUT DOWN TO
ACCOMODATE CANOPY
CLADDING

BEAM CUT DOWN TO
ACCOMODATE CANOPY
CLADDING

BEAM CUT DOWN TO
ACCOMODATE CANOPY
CLADDING

BEAM CUT DOWN TO
ACCOMODATE CANOPY
CLADDING

BEAM CUT DOWN TO
ACCOMODATE CANOPY
CLADDING

BEAM CUT DOWN TO
ACCOMODATE CANOPY
CLADDING

BEAM CUT DOWN TO
ACCOMODATE CANOPY
CLADDING

BEAM CUT DOWN TO
ACCOMODATE CANOPY
CLADDING

BEAM CUT DOWN TO
ACCOMODATE CANOPY
CLADDING

BEAM CUT DOWN TO
ACCOMODATE CANOPY
CLADDING

BEAM CUT DOWN TO
ACCOMODATE CANOPY
CLADDING

BEAM CUT DOWN TO
ACCOMODATE CANOPY
CLADDING

BEAM CUT DOWN TO
ACCOMODATE CANOPY
CLADDING

BEAM CUT DOWN TO
ACCOMODATE CANOPY
CLADDING

BEAM CUT DOWN TO
ACCOMODATE CANOPY
CLADDING

BEAM CUT DOWN TO
ACCOMODATE CANOPY
CLADDING

BEAM CUT DOWN TO
ACCOMODATE CANOPY
CLADDING

BEAM CUT DOWN TO
ACCOMODATE CANOPY
CLADDING

BEAM CUT DOWN TO
ACCOMODATE CANOPY
CLADDING

BEAM CUT DOWN TO
ACCOMODATE CANOPY
CLADDING

BEAM CUT DOWN TO
ACCOMODATE CANOPY
CLADDING

BEAM CUT DOWN TO
ACCOMODATE CANOPY
CLADDING

BEAM CUT DOWN TO
ACCOMODATE CANOPY
CLADDING

BEAM CUT DOWN TO
ACCOMODATE CANOPY
CLADDING

BEAM CUT DOWN TO
ACCOMODATE CANOPY
CLADDING

BEAM CUT DOWN TO
ACCOMODATE CANOPY
CLADDING

BEAM CUT DOWN TO
ACCOMODATE CANOPY
CLADDING

BEAM CUT DOWN TO
ACCOMODATE CANOPY
CLADDING

BEAM CUT DOWN TO
ACCOMODATE CANOPY
CLADDING

BEAM CUT DOWN TO
ACCOMODATE CANOPY
CLADDING

BEAM CUT DOWN TO
ACCOMODATE CANOPY
CLADDING

BEAM CUT DOWN TO
ACCOMODATE CANOPY
CLADDING

BEAM CUT DOWN TO
ACCOMODATE CANOPY
CLADDING

BEAM CUT DOWN TO
ACCOMODATE CANOPY
CLADDING

BEAM CUT DOWN TO
ACCOMODATE CANOPY
CLADDING

BEAM CUT DOWN TO
ACCOMODATE CANOPY
CLADDING

BEAM CUT DOWN TO
ACCOMODATE CANOPY
CLADDING

BEAM CUT DOWN TO
ACCOMODATE CANOPY
CLADDING

BEAM CUT DOWN TO
ACCOMODATE CANOPY
CLADDING

BEAM CUT DOWN TO
ACCOMODATE CANOPY
CLADDING

BEAM CUT DOWN TO
ACCOMODATE CANOPY
CLADDING

BEAM CUT DOWN TO
ACCOMODATE CANOPY
CLADDING

BEAM CUT DOWN TO
ACCOMODATE CANOPY
CLADDING

BEAM CUT DOWN TO
ACCOMODATE CANOPY
CLADDING

BEAM CUT DOWN TO
ACCOMODATE CANOPY
CLADDING

BEAM CUT DOWN TO
ACCOMODATE CANOPY
CLADDING

BEAM CUT DOWN TO
ACCOMODATE CANOPY
CLADDING

BEAM CUT DOWN TO
ACCOMODATE CANOPY
CLADDING

BEAM CUT DOWN TO
ACCOMODATE CANOPY
CLADDING

BEAM CUT DOWN TO
ACCOMODATE CANOPY
CLADDING

BEAM CUT DOWN TO
ACCOMODATE CANOPY
CLADDING

BEAM CUT DOWN TO
ACCOMODATE CANOPY
CLADDING

BEAM CUT DOWN TO
ACCOMODATE CANOPY
CLADDING

BEAM CUT DOWN TO
ACCOMODATE CANOPY
CLADDING

BEAM CUT DOWN TO
ACCOMODATE CANOPY
CLADDING

BEAM CUT DOWN TO
ACCOMODATE CANOPY
CLADDING

BEAM CUT DOWN TO
ACCOMODATE CANOPY
CLADDING

BEAM CUT DOWN TO
ACCOMODATE CANOPY
CLADDING

BEAM CUT DOWN TO
ACCOMODATE CANOPY
CLADDING

BEAM CUT DOWN TO
ACCOMODATE CANOPY
CLADDING

BEAM CUT DOWN TO
ACCOMODATE CANOPY
CLADDING

BEAM CUT DOWN TO
ACCOMODATE CANOPY
CLADDING

BEAM CUT DOWN TO
ACCOMODATE CANOPY
CLADDING

BEAM CUT DOWN TO
ACCOMODATE CANOPY
CLADDING

BEAM CUT DOWN TO
ACCOMODATE CANOPY
CLADDING

BEAM CUT DOWN TO
ACCOMODATE CANOPY
CLADDING

BEAM CUT DOWN TO
ACCOMODATE CANOPY
CLADDING

BEAM CUT DOWN TO
ACCOMODATE CANOPY
CLADDING

BEAM CUT DOWN TO
ACCOMODATE CANOPY
CLADDING

BEAM CUT DOWN TO
ACCOMODATE CANOPY
CLADDING

BEAM CUT DOWN TO
ACCOMODATE CANOPY
CLADDING

BEAM CUT DOWN TO
ACCOMODATE CANOPY
CLADDING

BEAM CUT DOWN TO
ACCOMODATE CANOPY
CLADDING

BEAM CUT DOWN TO
ACCOMODATE CANOPY
CLADDING

BEAM CUT DOWN TO
ACCOMODATE CANOPY
CLADDING

BEAM CUT DOWN TO
ACCOMODATE CANOPY
CLADDING

BEAM CUT DOWN TO
ACCOMODATE CANOPY
CLADDING

BEAM CUT DOWN TO
ACCOMODATE CANOPY
CLADDING

BEAM CUT DOWN TO
ACCOMODATE CANOPY
CLADDING

BEAM CUT DOWN TO
ACCOMODATE CANOPY
CLADDING

BEAM CUT DOWN TO
ACCOMODATE CANOPY
CLADDING

BEAM CUT DOWN TO
ACCOMODATE CANOPY
CLADDING

BEAM CUT DOWN TO
ACCOMODATE CANOPY
CLADDING

BEAM CUT DOWN TO
ACCOMODATE CANOPY
CLADDING

BEAM CUT DOWN TO
ACCOMODATE CANOPY
CLADDING

BEAM CUT DOWN TO
ACCOMODATE CANOPY
CLADDING

BEAM CUT DOWN TO
ACCOMODATE CANOPY
CLADDING

BEAM CUT DOWN TO
ACCOMODATE CANOPY
CLADDING

BEAM CUT DOWN TO
ACCOMODATE CANOPY
CLADDING

BEAM CUT DOWN TO
ACCOMODATE CANOPY
CLADDING

BEAM CUT DOWN TO
ACCOMODATE CANOPY
CLADDING

BEAM CUT DOWN TO
ACCOMODATE CANOPY
CLADDING

BEAM CUT DOWN TO
ACCOMODATE CANOPY
CLADDING

BEAM CUT DOWN TO
ACCOMODATE CANOPY
CLADDING

BEAM CUT DOWN TO
ACCOMODATE CANOPY
CLADDING

BEAM CUT DOWN TO
ACCOMODATE CANOPY
CLADDING

BEAM CUT DOWN TO
ACCOMODATE CANOPY
CLADDING

BEAM CUT DOWN TO
ACCOMODATE CANOPY
CLADDING

BEAM CUT DOWN TO
ACCOMODATE CANOPY
CLADDING

BEAM CUT DOWN TO
ACCOMODATE CANOPY
CLADDING

BEAM CUT DOWN TO
ACCOMODATE CANOPY
CLADDING

BEAM CUT DOWN TO
ACCOMODATE CANOPY
CLADDING

BEAM CUT DOWN TO
ACCOMODATE CANOPY
CLADDING

BEAM CUT DOWN TO
ACCOMODATE CANOPY
CLADDING

BEAM CUT DOWN TO
ACCOMODATE CANOPY
CLADDING

BEAM CUT DOWN TO
ACCOMODATE CANOPY
CLADDING

BEAM CUT DOWN TO
ACCOMODATE CANOPY
CLADDING

BEAM CUT DOWN TO
ACCOMODATE CANOPY
CLADDING

BEAM CUT DOWN TO
ACCOMODATE CANOPY
CLADDING

BEAM CUT DOWN TO
ACCOMODATE CANOPY
CLADDING

BEAM CUT DOWN TO
ACCOMODATE CANOPY
CLADDING

BEAM CUT DOWN TO
ACCOMODATE CANOPY
CLADDING

BEAM CUT DOWN TO
ACCOMODATE CANOPY
CLADDING

BEAM CUT DOWN TO
ACCOMODATE CANOPY
CLADDING

BEAM CUT DOWN TO
ACCOMODATE CANOPY
CLADDING

BEAM CUT DOWN TO
ACCOMODATE CANOPY
CLADDING

BEAM CUT DOWN TO
ACCOMODATE CANOPY
CLADDING

BEAM CUT DOWN TO
ACCOMODATE CANOPY
CLADDING

BEAM CUT DOWN TO
ACCOMODATE CANOPY
CLADDING

BEAM CUT DOWN TO
ACCOMODATE CANOPY
CLADDING

BEAM CUT DOWN TO
ACCOMODATE CANOPY
CLADDING

BEAM CUT DOWN TO
ACCOMODATE CANOPY
CLADDING

BEAM CUT DOWN TO
ACCOMODATE CANOPY
CLADDING

BEAM CUT DOWN TO
ACCOMODATE CANOPY
CLADDING

BEAM CUT DOWN TO
ACCOMODATE CANOPY
CLADDING

BEAM CUT DOWN TO
ACCOMODATE CANOPY
CLADDING

BEAM CUT DOWN TO
ACCOMODATE CANOPY
CLADDING

BEAM CUT DOWN TO
ACCOMODATE CANOPY
CLADDING

BEAM CUT DOWN TO
ACCOMODATE CANOPY
CLADDING

BEAM CUT DOWN TO
ACCOMODATE CANOPY
CLADDING

BEAM CUT DOWN TO
ACCOMODATE CANOPY
CLADDING

BEAM CUT DOWN TO
ACCOMODATE CANOPY
CLADDING

BEAM CUT DOWN TO
ACCOMODATE CANOPY
CLADDING

BEAM CUT DOWN TO
ACCOMODATE CANOPY
CLADDING

BEAM CUT DOWN TO
ACCOMODATE CANOPY
CLADDING

BEAM CUT DOWN TO
ACCOMODATE CANOPY
CLADDING

BEAM CUT DOWN TO
ACCOMODATE CANOPY
CLADDING